



ARCHAEOLOGICAL SOCIETY OF BRITISH COLUMBIA

In association with the Anthropology Department of UVic

FEBRUARY LECTURE

Nicole Smith

Clam Gardens: Traditional Shellfish Mariculture on the Northwest Coast

(one week late!) Tuesday, February 23rd, 7:30

(New Room!!!!) Cornett B135, UVic Campus, Victoria.



Come and join us for a presentation about clam gardens, a millennia-old form of traditional shellfish mariculture on the British Columbia coast. This presentation will provide a summary of some of the exciting clam garden research happening along the northwest coast by members of the Clam Garden Network; a multidisciplinary research group investigating where, when and how clam gardens were constructed, and their influences on local marine ecology. In this talk, archaeologist, Nicole Smith, will provide an overview of the ecological and archaeological research happening on clam gardens, with particular emphasis on how she and colleagues are dating the clam gardens using radiocarbon and optical luminescence methods. She will also talk about the community education and outreach programs happening in the southern Salish Sea.

Presentation by:

Nicole Smith and the Clam Garden Network (www.clamgarden.com Twitter @clamgardeners)

Bio: Nicole Smith has been working as an archaeologist along the BC coast for the last 16 years and has been fortunate to study clam gardens in Haida, Heiltsuk, Nuu-Chah-Nulth, and Coast Salish territories. As an independent researcher she works primarily with First Nations communities, the Hakai Institute, Parks Canada, the Bamfield Marine Sciences Centre and collaborates on academic projects with colleagues at local universities and colleges. Her time is divided between clam garden research, education initiatives, and the Hakai Institute funded *Discovery Islands Landscape Archaeology* project.

UPCOMING

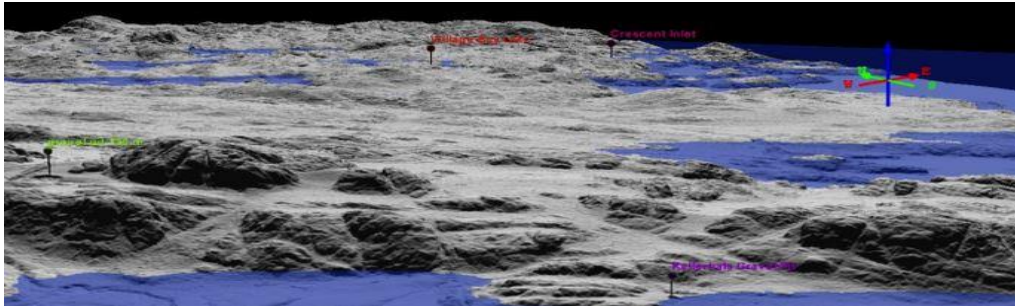
**March Lecture
Jacob Earnshaw**

**Culturally Modified Trees and Salvage Archaeology in Southern Nuu-chah-nulth Territories
Tuesday, March 15, 7:30**



**April Lecture
Alex Lausanne**

**Archaeological Prospection on Quadra Island, BC using predictive modeling, liDAR and sea level history
Tuesday, April 19th, 7:30**



**May Lecture
Adrian Sanders**

**Interior-Coast Salishan Mobility, Territoriality, and Interaction:
A Lower St'at'imc Perspective
Tuesday, May 17th, 7:30**

For information,

e-mail asbcvictoria@gmail.com

Please check out our website @ www.asbcvictoria.wordpress.com

and facebook @ <https://www.facebook.com/ASBCVictoria>